

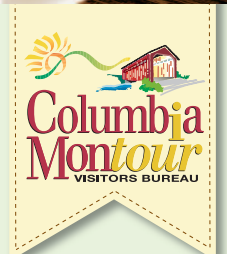
Quality Living

in Columbia and Montour Counties
Pennsylvania



presented by:
**The Columbia-Montour Partnership
for Community Development**

THE CHAMBER
The Columbia Montour Chamber of Commerce





**KEYSTONE
INSURERS
GROUP**

REGIONAL
OFFICE
LOCALLY
OWNED AND
OPERATED
BY:

**ASSOCIATED
INSURANCE
MANAGEMENT INC.**

P.O. Box 256
1402 Bloom Rd
Danville, PA 17821

570-275-0100
or
800-696-0007



**SPECIALIZING IN SELF INSURED AND
RISK PURCHASING GROUP PROGRAMS**

114 LOCATIONS ACROSS THE COMMONWEALTH

PERSONAL

AUTOMOBILE	MOTORCYCLE
DWELLING FIRE	PERSONAL UMBRELLA
FLOOD	VALUABLE ITEMS
HOMEOWNERS	BOATS

COMMERCIAL

BUSINESS PACKAGES	PROFESSIONAL LIABILITY
COMMERCIAL AUTOMOBILE	PROPERTY
COMMERCIAL UMBRELLA	WORKERS' COMPENSATION
GENERAL LIABILITY	BONDS

**check us out on your
computer or your mobile device**

www.kig-aim.com



Linked in



KEYSTONE INSURERS GROUP INC
SERVING OVER 500,000
INDIVIDUALS & BUSINESSES ACROSS PA
VOLUNTARY & EMPLOYER PAID BENEFIT PROGRAMS

REPRESENTING SUPERIOR RATED CARRIERS SUCH AS:

Travelers Insurance Co.	Foremost Ins. Co.
Mercer Insurance Group	Progressive Insurance.
Berkley	Keystone National Insurance Co.
EMC	Hagerty
Millville Mutual Ins. Co.	Donegal Ins. Co.
Ohio Casualty/Liberty Mutual	Harleysville
Philadelphia Insurance Co.	Penn National Ins. Co.
The Guard Group	Travelers Life & Annuity

OFFICE HOURS: MONDAY THRU FRIDAY 8:30AM TO 5:00PM, SATURDAY BY APPOINTMENT



There's something about this place...
something special.

Photograph by Nicholas A. Tonelli

Call it what you will. Our history. Our values. Our lifestyle.

Here, we haven't forgotten to care.

Geisinger has grown to be one of the most scientifically
advanced and innovative healthcare organizations in America.

But we've never forgotten where we come from.

Caring. It's such an old idea it almost seems brand new.

Geisinger

geisinger.org

CONTENTS



This publication was made possible by:
The Columbia-Montour Partnership for Community Development
 238 Market Street, Bloomsburg, PA 17815
 570.784.2522

Photography courtesy of:

Victor Koons, Columbia Montour Visitors Bureau, Shane Kiefer, Destination Blues, The Exchange, Retherford's Village Produce & Antiques, Montour Area Recreation Commission, Steve Varonka, Abigail House, Bloomsburg Nationals, Bloomsburg Fair, Old Forge Brewing Company, Ferry Street Growers Market, Studio D, Geisinger Health System, Knoebels Amusement Resort, and Bloomsburg Theatre Ensemble

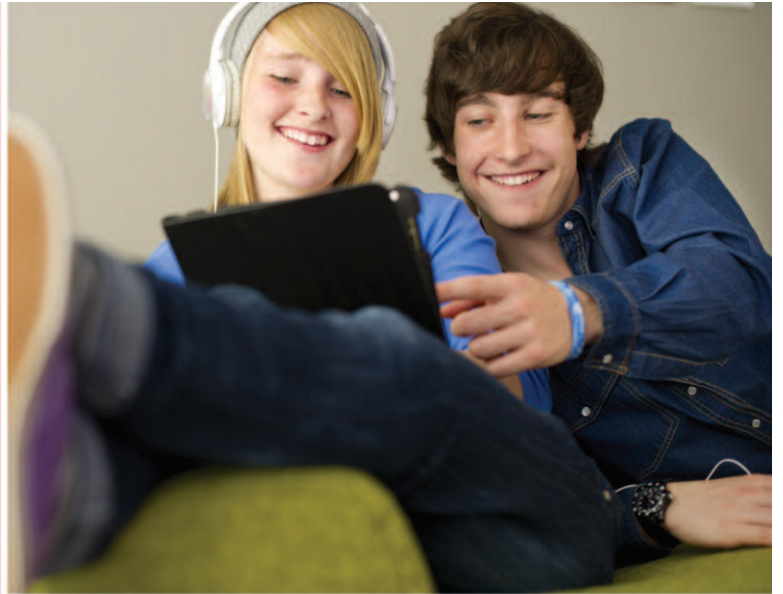
Quality Living Guide developed by:
Victor Koons Graphic Design, Danville
 in partnership with The Columbia-Montour Partnership for Community Development.

©2016 All information within this guide has been researched for accuracy using best practices available. The above parties cannot accept responsibility for omissions and/or errors.

<i>Welcome</i>	4
<i>County Highlights</i>	6
<i>Community Overview</i>	10
<i>Danville</i>	12
<i>Bloomsburg</i>	14
<i>Berwick</i>	16
<i>Housing & Real Estate</i>	18
<i>Recreation</i>	20
<i>Trails</i>	22
<i>Family Fun</i>	24
<i>Fairs & Festivals</i>	26
<i>Shopping, Wining & Dining</i>	28
<i>Brew Pubs & Food</i>	30
<i>Arts & Culture</i>	32
<i>Healthcare</i>	34
<i>Education</i>	37
<i>Business & Economic Development</i>	39

METROCAST BEGINS WITH ME

VIDEO - INTERNET - PHONE



THE METROCAST VIP BUNDLE

The most advanced services. All on one bill, from one company, for one low price.

Save hundreds of dollars each year off à la carte pricing.



DIGITAL VIDEO

with popular channels in stunning HD, plus TV Everywhere is included FREE.*



HIGH SPEED INTERNET

Stream videos, download, shop, play games, & more.



DIGITAL PHONE

with unlimited calling anywhere in the U.S. & Canada.



AND ASK US ABOUT

Home WiFi: Connect up to 3 computers and multiple wireless devices. Save on your smartphone and tablet data plans.*

Multi-Room DVR: Watch and record programs in up to 3 rooms.

Video On Demand: Enjoy hit movies & TV shows on your schedule, hundreds of hours FREE.*

*All services may not be available in all areas. Subscription to Basic Service required to receive any other level of video service. Additional subscription fee, HD-capable television and HD set-top converter required to receive HD channels on Expanded Basic service and above. Not all channels are available in HD in all areas. TV Everywhere services are authorized based on customer's video subscription level; all services may not be available on all devices. MetroCast Internet speeds may vary and are not guaranteed. Modem required. For best performance, use of a MetroCast-approved cable modem is recommended. A DOCSIS 3.0 modem is required to receive the fastest speeds for the High Speed Turbo and High Speed Ultra tiers and is strongly recommended for all other tiers. All channels may not be available in all areas. DVR recording capacities vary. On Demand programs may not be recorded with DVR. Some On Demand titles available with purchase only. Equipment may be required. Credit check may be required. Other terms, conditions or restrictions may apply. Money-back satisfaction guarantee requires cancellation within 30 days.

1.800.633.8578



MetroCast.com

WELCOME

Welcome to Columbia and Montour Counties! We're known for our rural beauty and progressive communities. Discover why so many people are attracted to our area through work and recreational opportunities and what keeps them here enjoying a happy, healthy lifestyle.

Approximate Mileage to Select Cities

The counties are conveniently located near Interstates 80 and 81; State Routes 11, 15, 487, 54 and 42.

Allentown, PA	85	Montreal, Quebec	427
Atlantic City, NJ	197	New York, NY	147
Baltimore, MD	191	Philadelphia, PA	136
Boston, MA	235	Pittsburgh, PA	238
Cleveland, OH	316	Scranton, PA	60
Gettysburg, PA	150	Washington, DC	235
Harrisburg, PA	82	Wilmington, DE	153
Lancaster, PA	119		

Area Overview

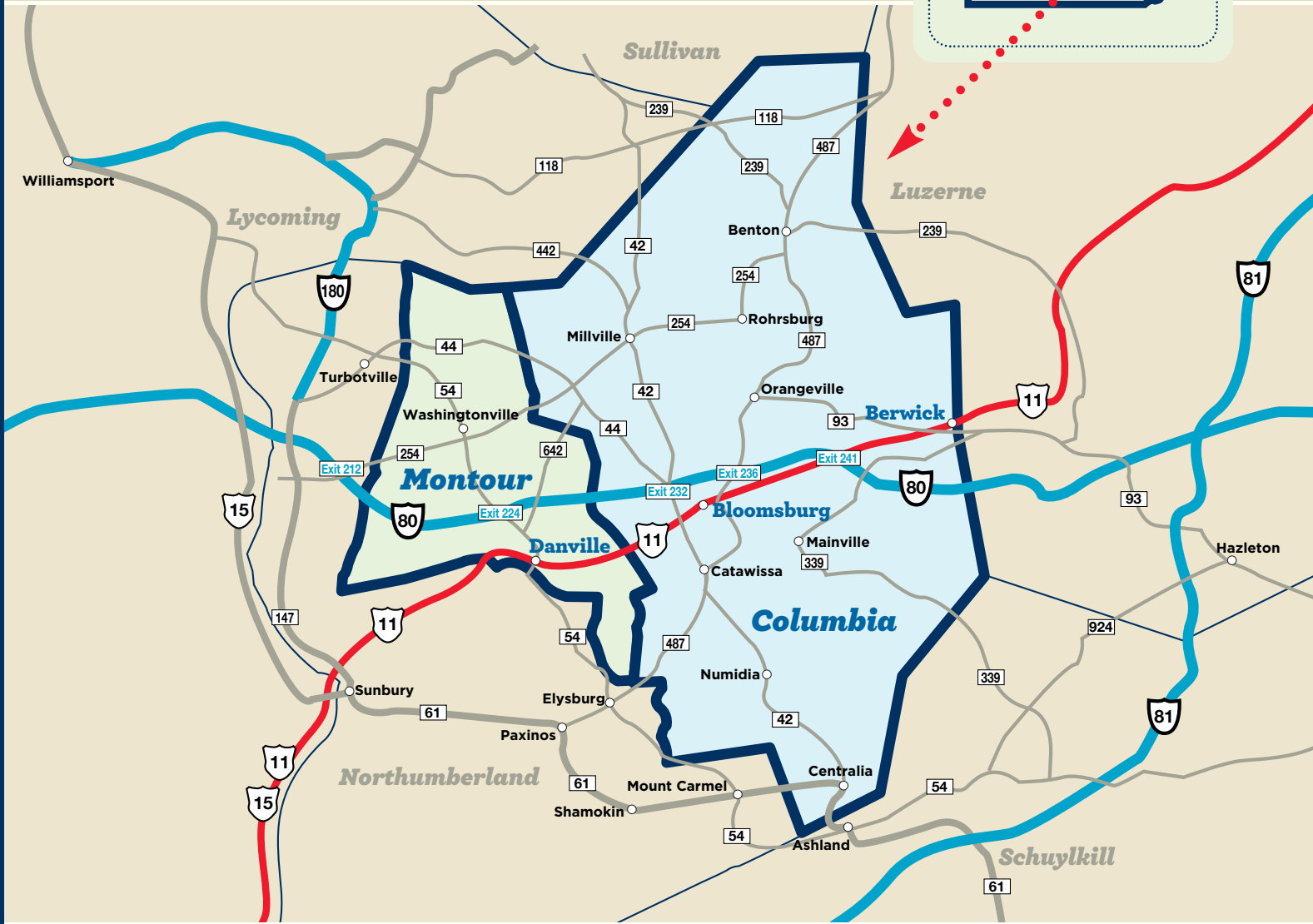
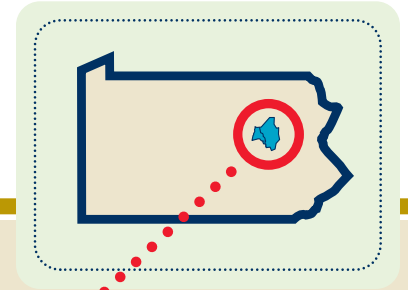
Columbia and Montour Counties offer their residents a unique environment. The landscape is comprised of wonderful river valleys with three major communities nestled along their banks. Rolling hills, farmlands, rural communities, forests, state parks and gamelands make up the rest. Beautiful riverfront parks, rails-to-trails for walking and biking, high-caliber races for runners, bikers, kayakers, and downtown revitalizations are just a few examples of the excitement happening within the area.

For those who occasionally crave the glow of big city lights, Philadelphia and New York City are only a few hours away. Columbia and Montour Counties are located along Interstate 80, and are within minutes of connecting with Interstate 81.





County Highlights



Download the Columbia-Montour Visitors Bureau App!

Planning a trip to Central Pennsylvania?
Use the app to view: maps, attraction
information, dining, lodging, and
so much more!



Covered Bridges

Covered bridges symbolize small-town America. Picturesque and sentimental, “kissing bridges” recall a time when life was simpler and closer to the land. Often remote from the Interstate Highways and cities of the twenty-first century, these photogenic covered bridges lure the explorer to find the little streams and country roads that the current century has almost passed by.

With 25 covered bridges, Columbia and Montour Counties boast the third largest concentration of these bridges in Pennsylvania. On a yearly basis, visitors from all over the world come and admire the craftsmanship used to construct these spans. No two covered bridges are alike and each one has its own history, personality, and story to tell.

Columbia County is home to one of only two remaining sets of twin covered bridges in the country. Located in Forks, The “Twins,” also known as the East and West Paden Bridges, are Columbia County’s treasures.



Carver Hall

Carver Hall, the icon of Bloomsburg University, was built in 1869 and is included in the National Register of Historic Places. In 1900 the dome was added to give the building an Independence Hall look and the clock tower was the result of a fund-raising project by students and faculty in 1911. The building houses the offices of the president, the provost, and vice president for academic affairs, as well as the Kenneth S. Gross Auditorium on the second floor.



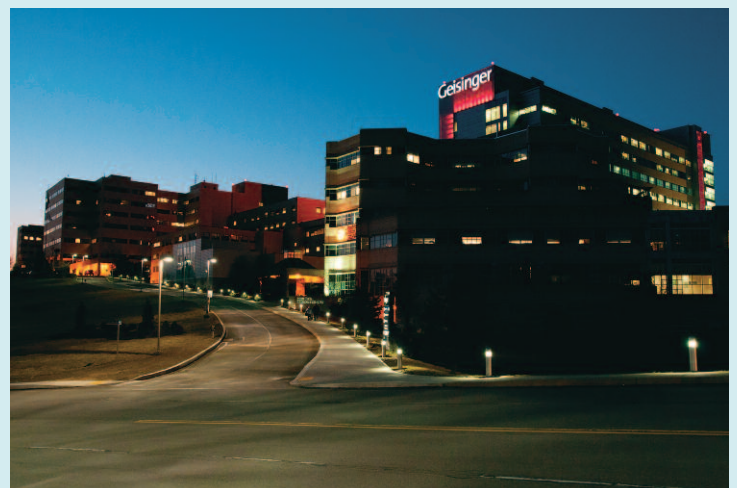
The Jackson Mansion

Clarence G. Jackson was born in Berwick in 1842. After serving in the Civil War, Jackson returned home and built his mansion. Since 2010, the Berwick Historical Society has aggressively worked to restore the home to its original 1879 state. The history of Colonel Jackson, his family, and the mansion is brought to life during public tours of the home from April through December.

Geisinger Health System

Since its founding in 1915, Geisinger Health System has evolved from a single, 63-bed hospital in Danville into a fully integrated health system. With more than 21,000 employees, a 1,100-member multi-specialty group practice, eight hospital campuses, two research centers and a 467,000-member health plan, Geisinger provides an estimated \$7.4 billion positive impact on the Pennsylvania economy.

When the George F. Geisinger Memorial Hospital first opened its doors in September, 1915, the legacy of excellence began. Today, Geisinger Health System has evolved into the nation's largest rural health services organization.



North Branch Canal Trail

The North Branch Canal Trail Project constructs a pedestrian and bicycle link that connects residents and visitors to the culture, nature and beauty of the Susquehanna River with the canals that served as the vital arteries of the region during a previous era. More than a simple place to walk and bike, the trail links communities, increases recreational opportunities, and provides economic and environmental benefits.

Specifically, the North Branch Canal Trail Project is developing a family-oriented pedestrian and bicycle trail between Danville and Bloomsburg along the route of the historic North Branch Division of the Pennsylvania Canal. The trail corridor extends 12 miles between Danville and Bloomsburg via Catawissa along the North Branch of the Susquehanna River.

The first 0.4 miles of the trail opened in 2015. Additional segments of the trail are in the process of completion and opening for travel. More segments are planned as resources become available to complete the construction of foot-bridges, the clearing of trails, and the installation of wayfinding signs.



what makes us the

**NUMBER
ONE**

**Mortgage Lender
in Our Area?***

*Based on the number of mortgages recorded in Columbia County, 2012 through 2015.

easy

You'll work with a **dedicated mortgage professional from start to finish.**

local

We consider more than just **the numbers.** All lending decisions are made locally by First Columbia Bank management who takes every unique situation into consideration.

solid

Our goal is to **help you grow and prosper** so we can build a strong, solid community... together!

**Let's see what we
can do for you!**

Call us today! **570-784-1660**
www.firstcolumbiabank.com

**FIRST
COLUMBIA**
BANK & TRUST CO.
Every step of the way.



Member FDIC

Benton • Berwick • Bloomsburg
Buckhorn • Catawissa • Elysburg
Lightstreet • Millville • Orangeville
Scott Township • Wal-Mart®



COMMUNITY OVERVIEW

Within Columbia and Montour Counties there are three main communities: Danville, Bloomsburg and Berwick. Smaller communities surround these three and all are located along the Susquehanna River. Each one is unique in culture and rich in history.





Danville



Danville, located in Montour County, has affected the lives of every American today. From 1829 to 1950, Danville was one of the most prominent iron manufacturing centers in the country. In 1845, the first T-rail in America was produced at the Montour Iron Works. With this invention, railroad transportation flourished and our industrial revolution “forged” ahead.

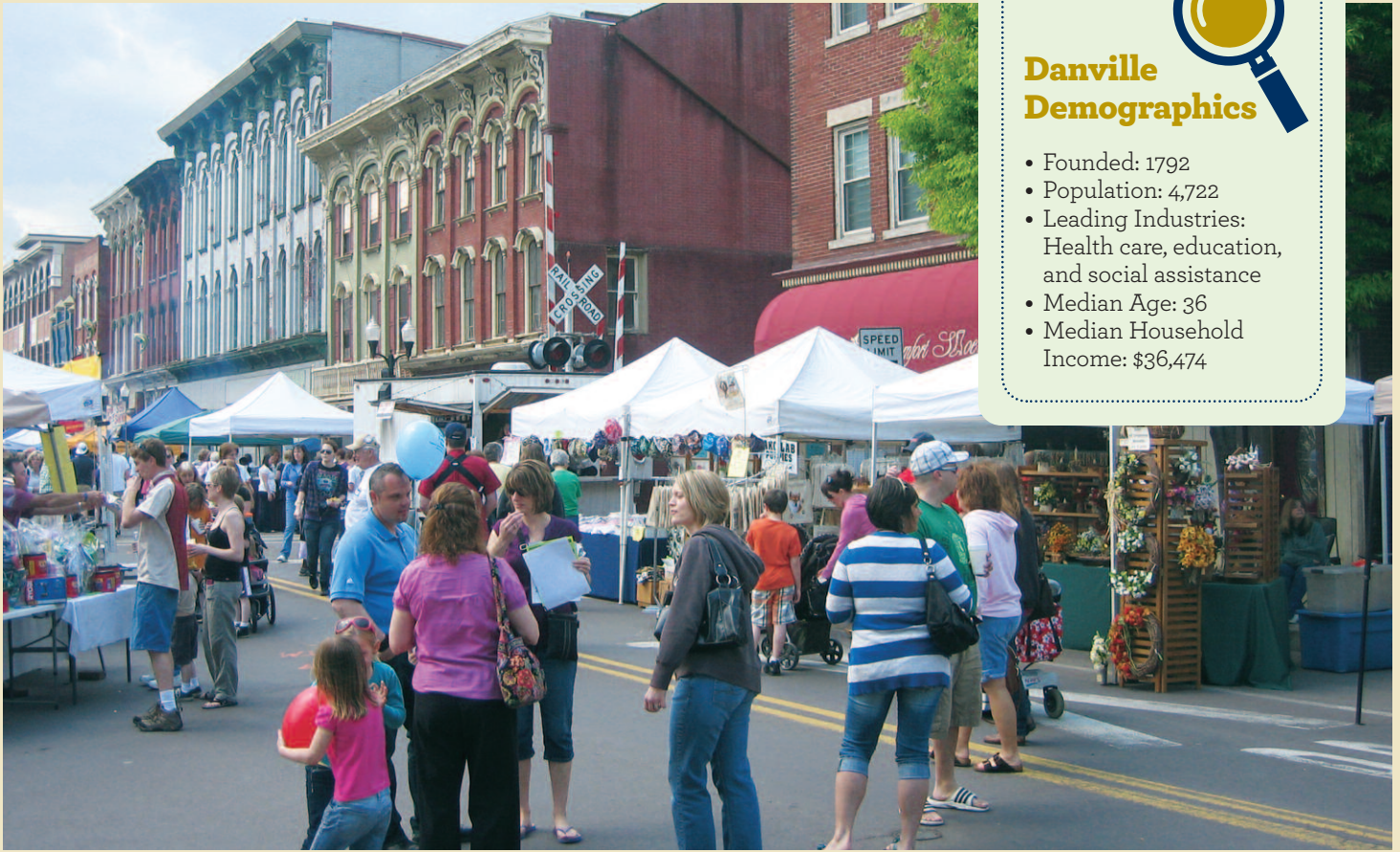
Danville’s downtown and many areas within the borough maintain the beauty and charm of its 19th century architecture. Danville continues to maintain its historic appearance, while creating new public space and infrastructure. Danville’s cultural heritage is preserved and celebrated by the Montour County Historical Society, which is located in the Montgomery House at the corner of Mill and Bloom Streets.

Spurred by the involvement of an active community of artists and public interest, Danville is creating an arts district in the heart of downtown. The sounds of live music, colorful public murals, craft and artisan festivals, and interactive art



displays all mark the Danville experience.

The Susquehanna River is a noted feature of this community. Beautiful riverfront parks, recreational walking trails, a public boat launch and a scenic bridge/tunnel connect Danville to neighboring community, Riverside.



Danville Demographics

- Founded: 1792
- Population: 4,722
- Leading Industries: Health care, education, and social assistance
- Median Age: 36
- Median Household Income: \$36,474



Our **priority**, is helping you to succeed.

A financial plan takes a "big picture" view of your entire financial situation. It acts as the engine for a well-run machine directed at a common goal. Here are some of the needs your financial plan can address:

- Retirement savings and income planning
- Disability income protection
- Estate Planning and survivor protection
- Long Term Care insurance protection and planning
- Financial roadmap and coordination of assets and investments
- Accumulation planning



G.S. Woods Financial Solutions

Graeme Woods • Principal, Financial Adviser
Mutual of Omaha Financial Advisors
313 Mill Street, Suite D, Danville, PA 17821
570-661-1066 • graeme.woods@mutualofomaha.com

Securities offered through Mutual of Omaha Investor Services, Inc. a Registered Broker/Dealer, Member FINRA/SIPC. Advisory services offered through Mutual of Omaha Investor Services, Inc. a SEC Registered Investment Advisory Firm. Mutual of Omaha Financial Advisors is the marketing name for Mutual of Omaha Investor Services, Inc. G.S. Woods Financial Solutions and Mutual of Omaha Investor Services, Inc. are not affiliated.

Bloomsburg

A unique feature of Bloomsburg is its designation as the only incorporated “town” in Pennsylvania, officially made so by The State General Assembly in 1870. All other communities in the state are cities, boroughs, or townships.

Due to its proximity to the Susquehanna River, the textile industry flourished in early Bloomsburg and continues today with Autoneum North America (formerly known as the Magee Carpet Company). Numerous other manufacturers and services such as Geisinger-

Bloomsburg Hospital, Kawneer Company Inc., Big Heart Pet Brands, and SEKISUI Polymer Innovations, LLC help to maintain a stable economic base.

Bloomsburg is known for its most prominent employer, Bloomsburg University. As the university on the hill, BU overlooks the town of Bloomsburg and is situated a few hundred yards from the community's business district. Students are actively involved within the community with more than 62,000 hours

Bloomsburg Demographics

- Founded: 1802
- Population: 14,699*
- Leading Industries: Education, health care, and social assistance
- Median Age: 22.3
- Median Household Income: \$29,694

**6,552 residents considered to be full-time college students, reflected in statistics*

dedicated to volunteerism each year.

The town is home to the annual Bloomsburg Fair, which is over 160 years old. Held at the Bloomsburg Fairgrounds, it's the largest agricultural fair in the state.



The Safelite Advantage™ **The industry's only nationwide lifetime guarantee.**

Your windshield is a critical part of your vehicle's safety system, protecting you in the event of a collision or rollover and aiding in proper airbag deployment. So, you should take care in who you trust to repair or replace it.

When you choose Safelite® – America's largest vehicle glass specialist – you get the reliability of the Safelite Advantage,™ a customer-driven bundle of five key features:

- ✓ **Always being there**
- ✓ **Knowing who to expect**
- ✓ **The best replacement technology**
- ✓ **Stronger repairs**
- ✓ **The industry's only nationwide lifetime guarantee**

3081 B Columbia Boulevard • Bloomsburg PA • 800-800-2727 • safelite.com



Berwick

Berwick Demographics



- Founded: 1786
- Population: 10,398
- Leading Industry: Manufacturing
- Median Age: 38
- Median Household Income: \$39,098



1942 Stuart Tank arrives in Berwick.
Photo courtesy of Warren Ruda/The Citizen's Voice.

Berwick is the easternmost river community in Columbia County with its roots based in manufacturing and industry. From the late 1800s until 1961, the American Car and Foundry Company was a primary employer in the borough, and the largest manufacturer of train and subway cars in the east. During the World Wars, the Berwick plant was known for producing Stuart Tanks. The Borough of Berwick's Stuart Tank Committee has been able to bring back an authentic Berwick-built tank as a memorial.

The site is now home to the Berwick Industrial Development Association complex which houses manufacturers and continues as the economic backbone of the community. Major employers in Berwick include: Wise Foods, Talon Energy, Deluxe Building Systems, CSS Industries, and Berwick Hospital Center.

The borough owns and operates Ber-Vaughn Park and Test Track Park, two natural areas reserved for biking, walking, boating and relaxing.

With its unique Victorian architecture, Berwick's downtown is the site of unique shops, restaurants, and services. Numerous events take place in and around the downtown throughout the year. The famous "Run for the Diamonds" marathon has been held on Thanksgiving Day for more than 100 years and "Christmas Boulevard" is a holiday destination for the entire area.



Convenient Locations to Serve You...

613 Montour Blvd.	Danville	570-275-5506
1149 Millville Rd.	Bloomsburg	570-387-8915
1901 West Front St.	Berwick	570-725-3317
145 Mill St.	Benton	570-925-2821
745 S. Market St.	S. Williamsport	570-329-0900
Route 6	Towanda	570-265-8473
4090 Memorial Hwy.	Dallas	570-675-8473
301 E. Main St.	Lock Haven	570-748-4018
9254 Rt. 14	Canton	570-673-3189
3579 Rt. 405	Muncy	570-546-3080
241 S. Mountain Blvd.	Mountain Top	570-474-6040
350 E. Poplar St.	W. Nanticoke	570-740-2830
4624 Jonestown Rd.	Harrisburg	717-652-3840
340 E. Chestnut St.	Mifflinburg	570-966-7860
712 Ann St.	Stroudsburg	570-421-8091

Energy to do more.

For our customers,
community and
environment.



Energy to do more®

www.ugi.com

HOUSING & REAL ESTATE

Life in Columbia and Montour Counties offers a full spectrum of housing opportunities.

Within the river communities of Danville, Bloomsburg, and Berwick, well preserved historic homes, new family structures, and older homes can be found in the area neighborhoods.

New developments have been established throughout the region, featuring beautiful new homes on newly landscaped properties. These developments are often located just a few minutes from the borough limits with easy access to traveled roads and town.

For those who prefer rustic life over residential, there are also plenty of lovely homes sitting on multiple acres of countryside.

Commercially existing properties and sites are available throughout the region. Business owners, companies and investors can find everything from downtown buildings with storefronts to large manufacturing facilities.

Well qualified real estate companies are available throughout the counties to assist with property selection.





Real Estate Comparison of our Largest Communities

Bloomsburg

- Total Housing Units: 5,397
- Most Homes Built: Earlier than 1939
- Median Home Value: \$120,700
- Median Rent per Month: \$724

Danville

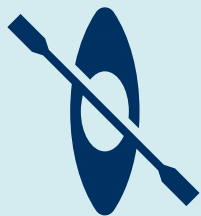
- Total Housing Units: 8,100
- Most Homes Built: 1970-1999
- Median Home Value: \$162,500
- Median Rent per Month: \$725

Berwick

- Total Housing Units: 8,665
- Most Homes Built: Earlier than 1939
- Median Home Value: \$114,200
- Median Rent per Month: \$705

RECREATION

Recreational opportunities are everywhere in Columbia and Montour Counties. If you enjoy the outdoors, you're going to love it here!



On the Water

Launch your kayak or canoe and have a pleasant paddle on the Susquehanna River. The river provides an opportunity for fishing, boating, bird watching, and picnicking along the shore.



Beautiful Parks to Explore and Enjoy!

Ricketts Glen State Park	13,000 acres, 22 waterfalls, forest, 26 miles of trails, wildlife, hiking, swimming, fishing, boating
Montour Preserve	10 miles of trails, shale pit, outdoor pavilions, 165 acre Lake Chillisquaque
Susquehanna Riverlands	1,200 acres on east and west banks of the river, wetlands nature refuge, lake, scenic overlook
Hess Recreation Area	Walking trails, skatepark, baseball fields, creek, bike obstacles, pavilion
Community Parks	Beautiful public spaces for all to enjoy including: Bloomsburg Town Park, Briar Creek Lake Park, Danville Memorial Park and Riverfront Park, Millville Town Park, Kocher Park, Berwick Test Track Park, and more!



Camping

Campgrounds and camping resorts are abundant within the two counties. Nearby state parks and forests also offer fun outdoor family adventures.

Columbia and Montour Counties offer some of the most scenic areas in all of Pennsylvania.

Trails

Fun and scenic... for the perfect walk, run or biking adventure!



Area Trail Descriptions



- 1. Ricketts Glen State Park:** 11 trails totaling 26 miles.
- 2. Montour Preserve:** 10 miles of trails around the preserve's lake and wilderness.
- 3. Robbins Trail:** Located at Hess Field, oldest rail to trail in the country. Distances up to 5 miles.
- 4. Geisinger Stewardship Forest Trails:** Located in the mountainous hillside behind Geisinger Medical Center. Many different loops and intersections.
- 5. North Branch Canal Trail:** Riverfront path begins in Danville and runs parallel to the river for over 3 miles. Will eventually complete the 12 mile river corridor to Bloomsburg.
- 6. Bloomsburg Rail Trail:** 1.5 mile trail along old railroad bed, at Railroad St.



Golf

The beautiful landscape combined with a wide variety of terrain makes for exciting golf outings for persons of any skill level. There are 4 public courses and 2 private club courses throughout the counties with many others nearby.



Now Accepting
New Patients



Kristin D. Hale
Au.D., CCC-A
Doctor of Audiology
Owner

- Full diagnostic hearing tests
- Cutting edge digital hearing technology
- Complimentary hearing instrument demonstrations and evaluations
- Interest free financing for those who qualify
- Personal and professional service from Doctors of Audiology

Call Today to Schedule Your Appointment!
Most insurances accepted, including Medicare and Geisinger Health Plan

2201 Fifth St. Hollow Road, Bloomsburg
(570) 784-8050
www.acehearingcenters.com

VISA MasterCard DISCOVER f

THE BLOOMSBURG FAIR

Over 160 Years!
Full Week Starting
Last Saturday
in September











Largest Agricultural Fair in PA, one of the Largest on the East Coast

Make Your Plans Now to Visit The Bloomsburg Fair.
It Just Keeps Getting Better and Better!

570-784-4949 | www.bloomsburgfair.com f

Family Fun

There's just so much to see and do!



Knoebels Amusement Resort

Offering family fun since 1926, Knoebels is America's largest free admission amusement park. The park, located off Rt. 487 in Elysburg, offers:

Top Rated Rollercoasters
Over 50 rides and attractions
Kid-friendly rides
Wide variety of award winning food
Swimming • Camping • Golf



Fantastic Facilities

Berwick YMCA

Preschool programs • Day care • Basketball, hockey, swimming, gymnastics, cheer programs for youth • Fitness for adults and seniors
Pool and party room

Bloomsburg YMCA

Preschool program • Child care programs
Swimming, Basketball, gymnastics, dance programs for youth • Fitness for adults and seniors • EVENTS: New Year's Eve 5K, Beast of Bloomsburg Strongman contest, Selfie race

Danville Area Community Center

Only indoor, heated pool in Montour County. Learn to swim programs, swim team
Full-sized gymnasium, basketball and racquetball courts • State-of-the-art fitness equipment • Many programs for children, preschool and babysitting services
Senior programs





Creative Play and Learning

Little ones are always invited to use their imagination and make new discoveries through play and hands-on learning throughout the area at places such as:

Kidsburg at Bloomsburg Town Park
The Children's Museum in Bloomsburg
Bloom Bounce at the Columbia Mall and
Kidsville in Danville.

Our Communities...

United Way
of Columbia
County
570.784.3131

Berwick Area
United Way
570.759.8203

LIVE UNITED

United
Way



UnitedWayColumbiaCounty.com • BerwickAreaUnitedWay.org

DERR, PURSEL, LUSCHAS & NAPARSTECK, LLP

ATTORNEYS AT LAW
& TITLE INSURANCE AGENTS

120 West Main Street, Bloomsburg, PA 17815

Phone: (570) 784-4654
www.bloomsburglaw.com



Beautiful Restored Victorian

Original home of
Abigail Geisinger
FOUNDER OF
GEISINGER MEDICAL CENTER

*Comfortable & Relaxing
accommodations!*

Private baths in all rooms.

Breakfast included.

Close to GMC & Downtown

12 CENTER STREET
DANVILLE, PA 17821
570.284.4677

ABIGAILHOUSEDANVILLE.COM



Visit Our New Gift Shop
C.C. Trading Company



Fairs and Festivals



Fairs and Festivals Information

The Bloomsburg Fair

Entire week starting last Saturday in September. Over 160 yrs. old. Largest agricultural fair in the state. Nationally known entertainment. Rides, food, exhibits, horse races, auto races, vendors.

Benton Frontier Days Rodeo

Mid-July, multiple days. Championship Rodeo, food, entertainment, horse show, Bull-A-Rama, Barrel Racing.

Danville Spring Fling

First Saturday of May. Over 200 vendors, coincides with the River Towns Race Series Marathon, food, entertainment.

Montour-Delong Fair

Early to mid-August, multiple days. Educational agricultural fair. Food, arts, rides, entertainment, livestock, fireworks.

Covered Bridge and Arts Festival

Early October held at Knoebels, Over 380 arts and crafts vendors, food, entertainment, amusement rides, covered bridge bus tours.

So Many More...

Renaissance Jamboree, Destination Blues, Millville Carnival, various downtown arts and crafts festivals, seasonal harvest festivals, bluegrass festivals, monster truck rallies and local fire company carnivals are just a few of the events to enjoy throughout the year.

Columbia and Montour Counties have no shortage of fairs, festivals, and community events to enjoy throughout the entire year.



navigate!

In need of financial direction?

At Service 1st, we've got the tools, resources and experts to guide you through every stage of your personal financial journey.

For more information call **800.562.6049** or visit us online at www.service1st.org.

Service 1st has locations in: Bloomsburg • Danville • Lewisburg
Loyalsock • Mifflinburg • Shamokin Dam • Sunbury • Wilkes-Barre
Equal Housing Lender

Federally Insured by NCUA

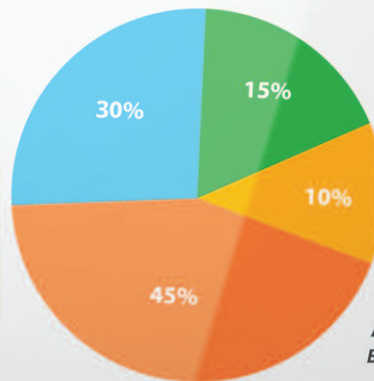


Give your business more...

G

Reliably fast business Internet
Advanced business phone solutions
Fiber-based Ethernet up to 1 Gig

Sales Goals



with
MetroCast
BUSINESS SERVICES

Call **1-888-689-4898** or visit MetroCastBusiness.com



Services not available in all areas.
Additional terms, restrictions and conditions apply.

SHOPPING, WINING & DINING



Shopping and dining here is unique and vibrant. Each downtown has its own special character and features everything from antiques and specialty shops to professional firms, artisans and restaurants. Many national chain stores and restaurants can be found at the I-80 interchange in Buckhorn.



Healthy Eating Abounds

Farmers' markets and fresh local produce are easily found from spring through fall.





Area Wineries

Our wineries dot the countryside of Columbia and Montour Counties and are all conveniently located off Interstate 80 or Route 11. Explore our area and sample our wines... you'll be pleasantly surprised!

Colonel Ricketts Hard Cider and Winery

Ciders aged in oak barrels, using local apples pressed on site. Free tasting in an historic barn.

Elk Mountain Winery

Tasting room and tree nursery. Enjoy wine and explore their plant and floral options for your garden.

Freas Farm Winery

Indoor and outdoor seating, live music, fire pits, and movies under the stars, award winning PA Preferred Wines.

O'Donnell Winery

Scenic park setting with indoor and outdoor seating. Ask about their Cork 'n Canvas classes.

Pickering Winery

Tasting room, antique store and gift shop.

Purple Cow Winery

Wines made on site by the owners. Indoor and outdoor seating, private event rooms available.

Red Shale Ridge Vineyards

Family-owned, using locally grown fruit and grapes in their 25 varieties of wine.

Shade Mountain Winery & Vineyard

Three locations including Danville. All their own grapes, indoor and outdoor seating with cold bottles of reds, whites, blushes, fruit wines, and seasonal specialties.

Three Dogs Vino

Tasting room with view overlooking the lake. Wine varieties to suit every palate.

Brew Pubs & Food



River Rat Brew Trail

The River Rat Brew Trail's breweries are located along Pennsylvania's Susquehanna River. All are accessible from Route 11—from Danville, Bloomsburg, to Berwick—so there's always somewhere to stop for great times and great brews.



Berwick Brewing

25 beers on tap in the German tradition, Specialty pizzas, PA wines
BerwickBrewing.com



Marley's Brewery and Grille

Wide variety of beers on tap, including Pack Dog Peanut Butter Ale
Full menu, PA wine, MarleysBrewery.com



Old Forge Brewing Company

16 beers on tap, 2 on the hand pumps,
Full menu, PA wine
OldForgeBrewingCompany.com

Turkey Hill Brewing Company

12 or more beers on tap, Full menu,
PA wines, Full bar, TurkeyHillBrewing.com

RiverRatBrewTrail.com



Our Unique Restaurants...

offer fine dining, Pennsylvania favorites, healthy fare, and exotic cuisines. Plus, many of our restaurants and chefs use locally grown ingredients to showcase the area's local agricultural treasures and to support our communities.

For a complete listing of restaurants, [download the app](#) or visit iTourColumbiaMontour.com



We are a family owned farm stand with a passion for what we grow!

Visit us for the freshest fruits & vegetables. We have beautiful hanging baskets & flowers along with vibrant mums in the fall. Heirloom varieties of pumpkins & produce, too! Visit us online for monthly flea market schedules.

Open: 9 am-Dark, 7 days a week, Spring thru Fall.

So much to see & do each weekend: **Spring/Summer:** Flea Markets, Strawberry & Peach Festivals. **Fall:** Corn Maze, Hay rides, Fort Retherford, photo areas, wonderful concessions, small live animals. **Endless Memories!**

Nov/Dec: Handmade Wreaths, swags, and more!

Retherford's Village Produce & Antiques



4095 Maple Grove Road, Benton, PA 17814 • 717-756-2287
http://retherfordsvillage.wix.com/retherfordsvillage

★ Phillips Emporium ★

a marketplace for high-quality items at reasonable prices since 1990

BIRKENSTOCK
Made in Germany • Tradition seit 1774

solmate socks
"Mismatched with care in Vermont."



MOONSTRUCK
CHOCOLATE CO.

LEUCHTTURM 1917

DETAILS MAKE ALL THE DIFFERENCE.

- Journals
- Reporter Notebooks
- White Line Journals®
- Stamp Albums For Travel

12 East Main St., Bloomsburg, PA 17815 • 570-387-8027
Thurs 10-6, Fri 10-7:30, Sat 10-6 • www.phillipsemporium.com

OPEN AN ACCOUNT AT BLOOMSBURG PHILADELPHIA FEDERAL CREDIT UNION

WE ARE A FULL-SERVICE FINANCIAL INSTITUTION
THAT HAS BEEN SERVING THE
Bloomsburg COMMUNITY SINCE 1987

PFCU
Bloomsburg
PHILADELPHIA FEDERAL CREDIT UNION

OPEN AN ACCOUNT TODAY AT PFCU.COM

Not here for our profit.
Here for yours.

PFCU.com | 570-784-5200

[facebook.com/PhiladelphiaFPCU](https://www.facebook.com/PhiladelphiaFPCU)
twitter.com/PhiladelphiaFPCU

Federally insured by NCUA

OLDFORGEBREWINGCOMPANY.COM

Now is the time for a great

Craft Beer!



**Make Danville, PA
your destination,
and visit our Brew
Pub and Restaurant.**

Enjoy lunch, dinner, and appetizers, along with up to
16 of our incredible beers on tap with 2 additional
Cask Conditioned beers rotating on the hand pumps.

Vegetarian options • Fresh ingredients
Local, Homegrown Beef and Chicken



[facebook.com/OldForgeBrewingCompany](https://www.facebook.com/OldForgeBrewingCompany)

Forged by Hand. Crafted with Pride.



**Available for home, or
to take along on your
next adventure!**

Find us at a distributor,
market, or wherever
quality craft beer is
sold. **In 16 oz cans.**



OLD FORGE
BREWING COMPANY

298 MILL ST. • DANVILLE, PA • 570.275.8151

ARTS & CULTURE



Grounded in the belief that art shapes both the spirit and vitality of a community; the Columbia-Montour Visitors Bureau created Susquehanna River Arts. By showcasing the works of our local artists, the Susquehanna River Arts project not only highlights the cultural assets of our region, but fosters an appreciation of both our communities and our heritage. [Facebook.com/SusquehannaRiverArts](https://www.facebook.com/SusquehannaRiverArts)

Art and culture is thriving in Columbia and Montour Counties with live theater, music, art galleries, and performances.



courtesy of Studio D, Berwick



The Exchange | ExchangeArts.org

The Exchange is an organization dedicated to bringing the arts to all communities throughout the region. It is responsible for **Destination Blues, Bloomsburg's Artfest**, and **The Exchange Gallery**, a curated space with monthly exhibitions located at 24 E. Main Street in Bloomsburg.



Professional Theater

The Bloomsburg Theatre Ensemble is a professional theatre company which has made its home in Bloomsburg since 1978. BTE performs at the Alvina Krause Theatre, BTE.org

Bloomsburg University's Celebrity Artists Series brings world renowned entertainers to Bloomsburg throughout the year. BloomU.edu/cas

Danville Arts Council seeks to support the arts – and artists of every kind – in Danville, and to create a larger cultural milieu in the area.

Artspace Gallery in Bloomsburg features fine arts and crafts. For more than 20 years, the gallery has exhibited and sold original pieces by local artists.

Bloomsburg University Greenly Center for the Arts was established by the Bloomsburg University Foundation Inc. in 2015 in downtown Bloomsburg. The first floor art gallery provides an intellectual and creative environment that allows artists to display their work in an optimal location.



HEALTHCARE



Columbia and Montour County residents have access to the finest healthcare practitioners and facilities available anywhere.





Our Area Hospitals

Geisinger Medical Center

Ownership Type: Non-Governmental
(Not for Profit)

Primary Service: General Medical
and Surgical

Personnel: 5,195 • Total Beds: 545

Annual Admissions: 26,686

Annual Outpatient Visits: 982,161

Annual Births: 486 • Founded: 1915

Geisinger Bloomsburg Hospital

Ownership Type: Non-Governmental
(Not for Profit)

Primary Service: General Medical
and Surgical

Personnel: 357 • Total Beds: 72

Annual Admissions: 2,041

Annual Outpatient Visits: 65,488

Annual Births: 208

Founded: 1905 (with Geisinger
since 2012)

Berwick Hospital Center

Ownership Type: Investor Owned
(For Profit Corporation)

Primary Service: General Medical
and Surgical

Personnel: 461 • Total Beds: 341

Annual Admissions: 2,757

Annual Outpatient Visits: 93,516

Annual Births: 223 • Founded: 1999



Senior Living

Columbia and Montour Counties offer a wide variety of the highest quality senior care and senior living options. These options range from independent and assisted living communities to complete care facilities.

Brookdale Senior Living • Reliant Senior Care Centers
Balanced Care of Bloomsburg
Westminster Place at Bloomsburg
Heritage Heights and Riverview Point Apartments
Maria Joseph Manor
Orangeville & Millville Health and Rehabilitation

Columbia/Montour Aging Office, Inc.

A Private
Non-Profit
Organization

Providing services to adults over 60 years of age to help maintain their independence and remain in their own homes and communities.

Services Offered

- Assessments - For Personal Care/Nursing Home Placement and In-Home Care.
- Care Management - Continuous follow up & provision of in-home services
- Family Care Giver Support Program - Assistance for the Care Giver.
- Waiver Program/Nursing Home Transition Program - Alternatives to Nursing Home Placement
- Care Transitions - helping to connect the dots from inpatient hospitalization to home
- Ombudsman - Investigation of complaints at Personal Care & Nursing Homes.
- Protective Services - Investigation of cases of abuse, neglect or exploitation.

702 Sawmill Road, Bloomsburg, PA

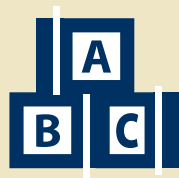
Hours: 8am-4:30pm Monday thru Friday

Business hours phone: **(570) 784-9272** • Toll Free 1-800-598-5001

Emergencies after hours call: (570) 784-0828 or Toll Free: 1-866-448-0141

Senior Centers

Benton (570) 925-6533 • Berwick (570) 759-8529
Bloomsburg (570) 784-8615 • Catawissa (570) 356-2219
Montour Co. (570) 275-1466 • Wilburton #2 (570) 339-1386.



Child Care Services



Danville Child Care Development Center

High quality early childhood education and care in a safe, nurturing environment. National Association for the Education of Young Children (NAEYC) Accreditation, Department of Education Preschool License.

CCIS of Columbia, Montour, and Northumberland Counties

Part of the Danville Child Care Development facility, which provides child care for low-income families.

Columbia Child Development Program Head Start & Child Care Services

Two locations with NAEYC Accreditation and a STARS 4 Program.

215 E. Fifth Street, Bloomsburg PA 17815
570-784-8618 • www.columbiachilddevelopment.org



SUSQUEHANNA VALLEY MEDICAL SPECIALTIES

6850 Lows Road, Bloomsburg

570-784-7300

Primary Care



Chris M. O'Neil, D.O.
Family Practice



Lori V. Masteller, D.O.
Family Practice



William J. Kuprevich, D.O.
Family Practice



Elizabeth Fritz, CRNP
Family Practice

Internal Medicine



Paul A. Saloky, D.O.
Internal Medicine



Eugene D. Radice, M.D.
Internal Medicine

Orthopaedic Surgery



Mark S. Williams, D.O.
Orthopaedic Surgeon



Pamela Morrow, PA-C
Orthopaedics

- Primary Care
- Internal Medicine
- Orthopaedic Surgery
- Surgery of the Spine
- Sports Medicine
- Arthroscopic Surgery
- Total Joint Replacement
- On-Site Diagnostic Imaging Center
CT, MRI, Dexa Scan, Mammography, Ultrasound, General X-Ray
- On-Site Surgery Center
- On-Site Laboratory Services
- Gynecology
- Rehabilitation Services
- Vaccinations
- Pediatric Care
- Pain Management
- Worker's Compensation

"Our success is measured only by your trust in our care. Thanking our local community for the past 19 years."

EDUCATION



With top rated school districts and higher education opportunities in our own backyard, Columbia and Montour Counties are great places to raise children and prepare them for their future.



Higher Education

Bloomsburg University

56 undergraduate majors • 51 undergraduate minors
21 graduate programs • Over 9,000 student enrollment
More than 250 student clubs and organizations

Luzerne County Community College

Two-year college with extension office in Berwick
Over 100 academic, technical and career training programs

Other Nearby Universities

Bucknell University • Susquehanna University
Pennsylvania College of Technology



Online Schools

KC Distance Learning and SusQ-Cyber Charter are regional resources which offer online schooling opportunities.



Private and Parochial Schools

Area Private School
Greenwood Friends School

Area Parochial Schools
The Bloomsburg Christian School
Columbia County Christian School
St. Columba School
St. Joseph School.

Greenwood Friends School



A nurturing, child-centered school committed to creative exploration and compassionate thought. Founded in 1978, it is the only accredited independent PreK to 8th grade school in the Central Susquehanna Valley.



1509 State Rt. 254
P.O. Box 438
Millville, PA 17846
570.458.5532
www.greenwood-friends.org

Now offering Preschool at two locations!
www.danvillecdc.org



Full Day Preschool

2, 3 and 5 days a week options
9:30-1:30, including lunch
PA State Certified Teacher
Curriculum linked to PA Early Learning Standards
Monthly Field Trips
Keystone STARS STAR 3 Program
PA Private Academic Preschool License
School Age Program Available

Full Day Child Care in an early learning environment

Infant, toddler, preschool openings available!
Curriculum linked to PA Early Learning Standards
Breakfast, lunch and snack included in tuition, as well as PS field trips!
PA Private Academic Preschool License
Keystone STARS STAR 4 Program, Accredited by NAEYC



2719 Bloom Rd.
Danville, PA 17821
570-284-4955

Call either location for
tour and enrollment
information!

398 Wall St.
Danville, PA 17821
570-275-4047

Regional School Districts



Benton Area

High School Population 311
Graduation Rate 94%
AP Courses 3
Highly Qualified Staff % 99%
Student Teacher Ratio 10 to 1



Bloomsburg Area

High School Population 419
Graduation Rate 99%
AP Courses 4
Highly Qualified Staff % 100%
Student Teacher Ratio 13 to 1



Southern Columbia Area

High School Population 408
Graduation Rate 99%
AP Courses 6
Highly Qualified Staff % 100%
Student Teacher Ratio 14 to 1



Millville Area

High School Population 309
Graduation Rate 96%
AP Courses 3
Highly Qualified Staff % 100%
Student Teacher Ratio 8 to 1



Berwick Area

High School Population 767
Graduation Rate 98%
AP Courses 14
Highly Qualified Staff % 98%
Student Teacher Ratio 3 to 1



Central Columbia Area

High School Population 477
Graduation Rate 100%
AP Courses 7
Highly Qualified Staff % 100%
Student Teacher Ratio 14 to 1



Danville Area

High School Population 606
Graduation Rate 95%
AP Courses 14
Highly Qualified Staff % 100%
Student Teacher Ratio 12 to 1



Columbia-Montour Vo-Tech

High School Population 624
Graduation Rate 95%
AP Courses 5 (Honors)
Highly Qualified Staff % 100%
Student Teacher Ratio 14 to 1

BUSINESS & ECONOMIC DEVELOPMENT



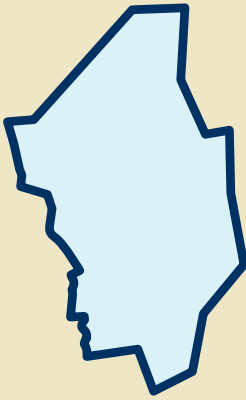
Our Regional Economy

The Columbia and Montour County area is fortunate to have a diversity of industries to keep the economy stable and positioned for growth. Healthcare, higher education, and well established manufacturers are the basis of an economic core that is less susceptible to turbulent economic times. This diversity also provides a wide range of employment opportunities. The area's assets combined with abundant business resources provides an environment that supports existing employers and fosters new business development.

The communities of Berwick, Bloomsburg and Danville were founded along the Susquehanna River as a critical resource for transportation and commerce. Adequate infrastructure is no less important to business today. Interstate 80 runs through both counties with five interchanges, providing easy access to major cities and business centers throughout the northeast. State Route 11 connects communities throughout the

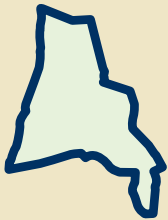
The Columbia and Montour County area has a diversity of solid industries to keep the economy stable and positioned for growth.

Columbia and Montour County Stats



Columbia County

- Total Population: 67,116
- Educational Attainment:
44.8% High School Diploma,
13.5% Bachelor's Degree,
8.3% Graduate Degree
- Labor Force: 32,581
- Unemployment: 5.8%, -9.38% since 2014
- Top Jobs by Occupation:
15.7% Office and Administrative
Support, 11.1% Sales, 8.2% Executive
Managers and Administrators,
7.9% Production Workers,
6.4% Education/ Training/Library
- Household Income: \$44,834
- Home Owners: 69.2%
- Renters: 30.8%



Montour County

- Total Population: 18,657
- Educational Attainment:
40.1% High School Diploma,
15.05% Bachelor's Degree,
13.07% Graduate Degree.
- Labor Force: 8,944
- Unemployment: 4.3%, -8.5% since 2014
- Top Jobs by Occupation:
15.3% Office and Administrative
Support, 12.8% Health Diagnosing and
Treating Practitioners, 9% Healthcare
Support, 6.5% Executive Managers and
Administrators, 6.5% Production
Workers
- Household Income: \$51,623
- Home Owners: 71.62%
- Renters: 28.38%

Organizations and people who are committed to growth, are constantly working to maintain and strengthen our area's business environment.

eastern half of Pennsylvania. Industrial rail parallels the River and Route 11 with spurs into other areas to serve customers. The Marcellus Shale natural gas pipeline infrastructure is being expanded in the area to provide opportunities for businesses to take advantage of affordable and abundant natural gas coming from surrounding regions.

A quality workforce is cited by area employers as a key component to their success. Manufacturers with locations throughout the United States and the world have stated that their employees here are among the best. Continuing education programs through the Columbia-Montour Area Vocational Technical School, Bloomsburg University, and a community college network provide resources for incumbent and new worker training in career fields ranging from industrial maintenance to nuclear energy to nursing. The Central Pennsylvania Workforce Development Corporation can provide detailed workforce information as well as funding for worker training programs.

A comprehensive network of support services exists to assist the growth of businesses ranging from home-based startups to large manufacturers. Free consulting services can help entrepreneurs develop a business plan, or help existing manufacturers improve process efficiencies. Resources from Bloomsburg University and other area institutions can assist with research, marketing, technology and other needs. A network of local and regional organizations help locate suitable properties, whether a downtown retail shop, warehouse, or available land for development. These organizations also help navigate the process of getting established in properties. Revolving loan and other funding programs are available for working capital, equipment purchases, training, and building improvements. The resources can be overwhelming. The Columbia Montour Chamber of Commerce serves as a clearinghouse to connect business needs with these resources.

Columbia and Montour counties are well positioned for economic growth far into the future; as an area attractive for businesses and employees to locate. Good people committed to growth are constantly working to maintain and strengthen the business environment. Communities, agencies and residents understand that a diverse and healthy business base is critical to a vibrant region.

Looking to start or grow your business?

Small Business Development Centers provide entrepreneurs with the knowledge and skills they need to launch and sustain successful businesses.

Contact your local SBDC for consulting assistance provided at no charge and low-cost educational programs.

S B D C

P E N N S Y L V A N I A

Helping businesses start, grow, and prosper.

Bucknell University SBDC

www.bucknell.edu/SBDC
570-577-1249

Serving Montour County

Wilkes University SBDC

www.wilkes.edu/SBDC
570-408-4340

Serving Columbia County



One number.
Eight convenient
locations.

Schedule an appointment today.
844-793-1232

Berwick



Jose Derr, D.O.
Family Practice

101 W. 9th St.



Alexandra Motroni, M.D.
Internal Medicine

1918 W. Front St.



Laura Swingle, M.D.
Pediatrics

751 16th St., Suite 400



Robert Gregor, Jr., CRNP
Family Practice

751 16th St., Suite 400

Berwick/Bloomsburg



Phillip Longnecker, PA-C
Family Practice

101 W. 9th St.

3151 Columbia Blvd.

Bloomsburg



Leon Francis, M.D.
Family Practice

3151 Columbia Blvd.

Hazle Township



Patricia Rodriguez-Hudson, CRNP
Family Practice

1201B N. Church St.

Hazle Township/Sugarloaf



Sumaira Khan, M.D.
Family Practice

1201B N. Church St.

1 Brookhill Square S.

Mifflinville



Kathy Baylor, M.D.
Family Practice

134 W. Third St.

Shickshinny



Scott Sterling, D.O.
Family Practice

109 S. Main St.

Sugarloaf



Ira Vohra, M.D.
Family Practice

1 Brookhill Square S.

**Commonwealth Health
Physician Network**

Berwick Medical Professionals

Members of the Medical Staff at Berwick Hospital Center

Berwick Medical Professionals • Great Valley Cardiology • InterMountain Medical Group • Physicians Health Alliance

OVER 50 YEARS OF QUALITY IN BLOOMSBURG

I n s p i r a t i o n • I n n o v a t i o n • P a r t n e r s h i p



ARCHITECTURAL ALUMINUM SYSTEMS
ENTRANCES + FRAMING
CURTAIN WALLS
WINDOWS

We continue to add to the quality of life by leading the next generation of sustainable building designs with a focus on innovative market solutions like high-thermal performance, hurricane resistance, and blast mitigation.

From the unmatched Kawneer doors, the landmark family of Trifab® Storefront Framing Systems, the versatile 1600 Wall System® Curtain Wall products, and the U.S. Department of Energy-backed OptiQ™ Series windows, our comprehensive product portfolio solves a myriad of high-, mid-, or low-rise application challenges. And if you can't find exactly what your project needs, our dedicated Architectural Services Team will partner with you to design custom applications for most any building type, with particular expertise in multi-family, education, healthcare, public buildings, retail, commercial office space, and sports facilities.

Kawneer Company, Inc., headquartered in Norcross, Georgia, operates strategically located manufacturing facilities and fabricating service centers throughout the United States and Canada.

Kawneer Company, Inc.
500 E. 12th St. | Bloomsburg, PA 17815 | Ph: 570.784.8000

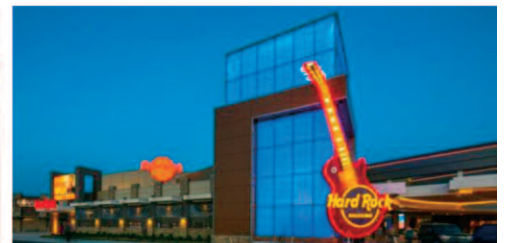
K A W N E E R . C O M

©Kawneer Company, Inc. 2016

Kawneer has been helping add to the quality of life in Bloomsburg, the surrounding area and throughout North America with best-in-class architectural aluminum products and systems for healthcare, entertainment, education, retail, office buildings and more.



GEISINGER CENTER FOR HEALTH RESEARCH • Danville PA



HARD ROCK ROCKSINO • Northfield Park, Ohio



ROBERT M. SMITH STUDENT CENTER, SLIPPERY ROCK UNIV. • Slippery Rock, PA



DICK'S SPORTING GOODS •
Cranberry Township, PA



WENDY'S RESTAURANT •
Hummelstown, PA